

ENTRADA

FRIENDS OF CAPITOL REEF

VOLUME ONE
ISSUE 1

MAY/JUNE 1998

HAPPY NEW YEAR, ENTRADA MEMBERS

Welcome to an Entrada Institute new year. Entrada enters the new year with some new faces, a new logo, new events, and an exciting new partnership with Capitol Reef National Park. Last year saw a transition in the make-up of the board and a re-commitment to a new and better Entrada. As you know, the word "Entrada" is more than the name of a rock formation; it is Spanish for entranceway or to make an entrance. We are making an exciting entrance into the new year with you and our new Friends of Capitol Reef.

The "old" Entrada was great, due in part to the vision and leadership of co-founder and past president Larry Clarkson. His leadership and hundreds of hours of work are the foundation of Entrada and our partnership with the park.

We held some great events last year in Torrey and in the surrounding area that we all love so much. In addition to the fantastic musicians who played at the Roost and writers who read poetry, fiction, and non-fiction, we branched out into the surrounding communities with new adventures. The summer was highlighted by the ever-popular "Writing

From the Land" workshop in September. The workshop attracted a number of participants with a wide variety of writing interests. Carol Houck Smith, senior editor for W.W. Norton, has become an icon at the workshop. Carol offers advice, review, and encouragement to many of us, and who can forget that infectious laugh!

Entrada capped off the 1997 season with a tour of rock art sites in the new Grand Staircase/Escalante National Monument. Several members and guests joined some of the Entrada board members for an afternoon in Calf Creek looking at a mixture of Anasazi and Fremont rock-art panels. A great Dutch oven dinner prepared by the Larry Davis family of nearby Boulder topped off the evening. After the campfire was lit, Larry entertained the group with a hilarious and informative look at what it might have felt like to be an Anasazi.

Changes in Entrada for 1998 include the creation of an Entrada web page and finalizing of the details between Entrada and Capitol Reef National Park for us to complete our partnership with Friends

of Capitol Reef. This partnership will strengthen Entrada at the same time that it will be of great benefit to the Park.

We started this season March 20, 1998, at Westminster College in Salt Lake City, with a talk by Trent Harris and a showing of his film *Rubin and Ed* following a performance by Utah County's Alex Caldiero. The light refreshments provided an opportunity for old and new members of Entrada/Friends of Capitol Reef to get acquainted. All in all, it was a great evening!

The Entrada Board has a great season planned. (See the enclosed flyer.) We will welcome many old friends back to perform and introduce many new ones. Our agreement with the park gives us greater access to facilities, which will allow us to broaden the scope of our activities. Thanks for your support last year. We hope to see you soon.

WAYNE WONDERLAND TO CAPITOL REEF: THE CREATION OF UTAH'S FIFTH NATIONAL PARK

By Barry Scholl

In 1910, Ephraim "Port" Pectol, Mormon bishop of Torrey and owner of the Wayne Empire general store, became interested in publicizing the rugged Wayne Wonderland area east of Torrey. By all accounts, Pectol was both a visionary and a pragmatist. He appreciated the area's scenic attractions but was also confident that the creation of a state park would draw visitors and help strengthen the area's struggling economy.

By the early 1920s, Pectol had attracted support from a handful of locals, most notably Joseph Hickman, a teacher at Wayne High School. Hickman was elected to the Utah state Legislature and succeeded in convincing fellow lawmakers to set aside 160 acres at Fruita as a state park. In 1933, Pectol himself was elected to the legislature, where he pushed Wayne Wonderland as a national park. He was supported in his efforts by Dr. J.E. Broaddus, A.L. "Doc" Inglesby, Arthur Chaffin, and others. In 1937, Wayne Wonderland finally became a National Monument.

At the dedication ceremonies, on August 2, 1937, Utah Governor Henry H. Blood predictably touted the link between the creation of the monument and the improvement of the area's primitive roads. He also accurately foresaw an increase in tourist traffic. But perhaps most interesting, given the inflammatory and anti-federal rhetoric espoused by so many of his successors, Blood welcomed the assistance of the National Park Service in managing the area: "Proper control, or at least better control than there has been in the past, will result from establish-

ment of this Capitol Reef National Monument. Uncle Sam will help us, and indeed, may direct us. At least we shall have the advantage of the leadership and advice of the men skilled in the handling of such problems, whom the Park Service may send here or choose to train among our own people."

Eventually there would be a well-trained staff, but for the monument's first years there was no official budget for improvement, for interpretation—not even for a superintendent. Until 1959, the monument was not even activated as a separate unit of the National Park Service. Prior to that time, it was administratively managed by the superintendent of Bryce Canyon and Zion National Parks.

Throughout the 1940s, the Park saw little improvement and few visitors. Roads were rough; tourist accommodations primitive. A single, highly unreliable phone line sometimes brought news from the outside world. The only electricity was provided by private generators. Through the efforts of President Roosevelt's New Deal, some improvements were effected to trails, and a handful of official buildings were constructed. But the monument was lacking an on-site manager because there was still no money to pay one. Then along came Charles Kelly. *[Continued next newsletter]*

Larry Clarkson: Founder and Past President

A lot of people have contributed to the success of the Entrada Institute/Friends of Capitol Reef, but none has been more devoted to seeing the orga-

nization survive its crucial early years than former president Larry Clarkson. A graphic designer, Larry contributed distinctive posters, tee shirts, and signs. In addition, his creative use of fonts drew a lot of attention to the organization's original logo, which consciously reflected the rugged, corrugated landscape around Capitol Reef. Larry also devoted countless hours to thankless but vital jobs like organizational planning and budgeting. We all know how fast paperwork piles up, particularly when one already has a full-time job. Larry took it upon himself to see that the young organization wasn't overwhelmed by the requirements to keep up on documentation. Finally, there is probably no one who loves the Capitol Reef area more than Larry. An accomplished hiker and student of the area's history, his enthusiasm for the region helped to ignite the interest and spark involvement of more than one budding Entrada member. On behalf of the board and membership, we want to thank Larry for his many contributions and for leading Entrada into being the organization it is today.

Welcome to Capitol Reef by Chuck Lundy

The creation in 1997 of the Friends of Capitol Reef represented a very positive milestone for Capitol Reef national Park and the people who care about this special place. In the past few months the Entrada/Friends partnership has been enhanced with an even stronger and clearer commitment to shared ideals.

The Entrada Institute/Friends of Capitol Reef will be



A Model T Ford encounters horse-drawn wagons in Capitol Gorge.

hosting an exceptional program schedule this year. Park staff and I are really looking forward to these programs and the opportunity they represent to meet many of you. Many of these programs represent terrific opportunities to learn more about the area's natural and cultural resources and the rich history of the people who have called it home.

It's my hope that sometime this summer we might arrange for a "gathering of the Entrada/Friends" clan. If there were interest I would offer to serve as host. In addition to getting better acquainted, it also provides an opportunity to introduce the Board and Membership to the park's new Ripple Rock Nature Center, which will open later this year. Ripple Rock will be an ideal location for many of the Entrada/Friends workshops and activities scheduled for this year and will formally serve as the park's expanding Educational Outreach Program.

Thanks to everyone involved with the Entrada Institute/Friends

of Capitol Reef for your enthusiasm and shared interests in this Enchanted Wilderness.

(Chuck Lundy is the superintendent of Capitol Reef National Park.)

Friends and Sponsors

The following individuals and establishments sponsored activities of the Entrada Institute during the 1997 season. We are grateful for their support.

Cactus Hill Ranch, George and LinJa Coombs, Teasdale.

Café Diablo, Gary and Jane Pankow, Torrey.

Chuckwagon Lodge, Randy and Claudia, Torrey.

Cockscomb Inn, Alissa Stevens, Teasdale.

Mule Twist Inn, Eric and Penny Kinsman, Teasdale.

Pine Shadows Bungalows, Sherrie and Wayne Shumway, Teasdale.

Torrey DUP Society, Jessie Pace, President, Torrey.

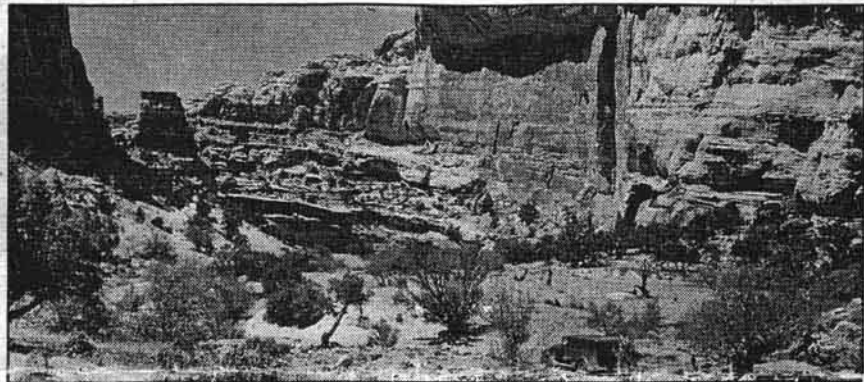
**Capitol Reef Inn
Southey Swede, Torrey**

Recycle Your Used Books

The books gathering dust on your shelves could be serving a good cause. The Robber's Roost Bookstore in Torrey welcomes your contributions, and the proceeds from used book sales are shared with Entrada/Friends of Capitol Reef. With additional funding, we can broaden the educational and cultural activities offered during the 1998 season. So clean out your bookshelves, and support a cause you believe in.

Meet the new members of the board

Ann Kelly, secretary, retired from teaching behaviorally disturbed adolescents to become the full-time mother of Sara, who is now 7 and in the first grade. After moving to Utah from California 13 years ago to escape the boomtown environment of San Jose, she now finds herself in the new boomtown of Bountiful. She loves the outdoors



Truck rolls through Grand Wash in the 'thirties

and discovered Entrada through her participation in the "Writing from the Land" workshop last September. She camps and writes fiction in her spare time.

Frank McEntire is a sculptor and art critic. The author of *Dreams and Shields: Spiritual*

Dimensions in Contemporary Art and *Wonderfully Worth Doing*, he has also written many exhibit catalog essays and feature articles in local and national publications. His installations and assemblages have been shown in his home town of Houston, in

New Mexico, and throughout Utah. His work was recently featured in *Material Christianity: Religion and Popular Culture in America* by Colleen McDannell, and in the new edition of *Utah Painting and Sculpture*.

