

## Hello Redrock Pals,

It's summer on the plateau once again and as the desert and mountains start to green, we've put together a great lineup of summer events and instituted some changes, some of which we hope will take Entrada to a new level of excellence.

Our long-serving Administrative Assistant Brenda Winawer and her husband and board member Hank, decided to concentrate on family and other pursuits. We wish them well and thank them for their long and excellent service. We also want to thank Nano Podolsky, Kathy Kankainen, Laura Scholl and James Anderson for their major contributions to the organization in so many ways.

I'd like to also thank all of our board members (listed elsewhere in this issue) who put in more time and energy than you can imagine to make Entrada work.

As we were writing up a job description for a new employee it became obvious that what we needed was a Director who could take on a number of responsibilities and assignments to make Entrada a much more active part of the community and to further our mission more fully than volunteers can do on their own. We are pleased to report that Nan Anderson has agreed to come on board in this new position. We also will open an actual office to house the Director and Entrada files, computer and various items that are scattered hither and yon with various board members. We are working to secure a Torrey Center Street location.

So what's new, you might ask? (Well there's always something, for the latest check out our revamped website ([www.EntradaInstitute.org](http://www.EntradaInstitute.org)). Yes, we've been remiss in the past about keeping people up to date on membership status and benefits (which include discount Torrey Music Fest

Tickets and Robber's Roost Bookstore discounts). So enclosed with this issue you should also receive a membership renewal form. Sign up now and you also get a copy of our wonderful CD Journal. It's packed with stories, poetry, music, art and photography, and every bit of it inspired by the Colorado Plateau. If you already received one at the Fundraiser or elsewhere, pass it on to someone else who loves the Colorado Plateau.

We're exploring a potential new partnership with the National Parks Conservation Association. A portion of their recent initiatives is to identify ways to make national park gateway communities like Torrey more a part of quality tourism experiences by capitalizing on local natural, historic and human resources and sustainable development. We hope to co-sponsor some interesting community conversations about this in the future.

The Scholl family has agreed to allow us to make some improvement to the Robbers Roost Bookstore property to better serve people coming to Saturday events and the Torrey Music Festival. Barry and I built a storage shed, which we jokingly call "Entrada World Headquarters". We are also moving and expanding the stage to provide better sight lines and seating areas and thinking long-term about building a real headquarters and potential educational and performance center.

I'm just going to be blunt about this next bit, Entrada is looked upon by many permanent Wayne County residents as a bunch of rich Salt Lakers who just care about their own little piece of paradise and care very little about local concerns. While this may be an unfair and inaccurate perception, perception can be people's reality. Certainly most of our dues-paying members have strong city ties but that



doesn't mean many of us aren't engaging with the community, as we should be. Certainly one of the ways we want to become more engaged is by having our new director work closely with Wayne County locals like our board member and Wayne High School teacher Frances Banta to involve local kids with more of the rich cultural events we sponsor. Our first step in that direction was the Cowboy Poetry Contest that brought six fledgling cowboy poets a bit of local fame, cash awards and a chance to perform at our last two annual Cowboy Music & Poetry Festivals.

The thing is, all of us as Entrada members and all of us as Wayne County residents care about the Colorado Plateau, its history and its future, the prospects for our young people and preserving the lifestyles, opportunities and landscapes that we all depend on in some way. Building bridges helps us all.

Get involved yourself. We need volunteers to work the Torrey Music Festival, to help with various events and to help with our fall Gala and Fundraiser. Give me a call if you've got ideas, things to donate or just to chat about Entrada and the land we all love. My Salt Lake number is 801-363-6903 and in Teasdale 435-425-3699.

See you down the Trail,  
Steve Lutz, President

## Your Board

It's been awhile since we've told you about our board members, and there have been some comings and goings, so here's a short bio on each board member. Unlike some nonprofits, this is a true working board. Everyone pitches in to help, whether it's fundraising, lining up talent for our two festivals and the summer Saturday events, writing press releases, laying out the budget, editing the newsletter, etc. etc.

As you can see, we're a diverse bunch of folks, but we're all united by a commitment to Entrada's mission, which is to celebrate the Colorado Plateau through the arts, humanities, and natural science. Some of us live in mid-Wayne County, some of us live in Salt Lake City, and some of us split our time between the two, but we all agree that Wayne County is a unique and marvelous place.

**Frances Banta** works as a counseling assistant at the Wayne High School. She loves animals, reading, plants, and hiking.

Joining the board two and a half years ago, **Stacey Board** now serves as our Secretary. After being a full time musician for ten years, she is now a KUED employee working in marketing and development, and playing music for the love and fun of it.

**Francois Camoin** came to the United States in 1951 and landed in Chicago instead of New York by mistake. Nothing has gone quite right since then.

**Carol Gnade** is a social worker, activist, organizer, board member. Said to be ram•buñctious, *a.* uncontrollably exuberant.

**Bonnie Hayes Callis** is an elementary art teacher, community organizer and Capitol Reef / Torrey pilgrim since the early 70s (even when living 5000 miles away). Bonnie loves the people and the "place" of the Colorado Plateau.

**Annie Holt** is a healthcare executive and (now for the good part) dog lover, Torrey-ite, and desert wanderer.

**Kirtly Jones** is past President (and past Secretary and past Treasurer...). She teaches gynecology and reproductive medicine at the University of Utah and her interests include the geology, biology, and natural history of the Colorado Plateau.



(above) Entrada boarded members prepare for the annual 4th of July Parade in Torrey, Utah.



(left) Don Gomes, Barry Scholl, and Steve Lutz exhibit their Entrada pride.

**Steve Lutz** splits his life between living in Salt Lake and Teasdale. When he's not working at the Utah Valley University, he can probably be found playing bluegrass music, working on his two old houses built in 1905, or recreating in the canyons of Southern Utah.

**Jan Nystrom** is the associate director of the Wallace Stegner Center at the S.J. Quinney College of Law. She enjoys backpacking on the Colorado Plateau with her dogs, Scrap and Willie.

**Bruce Perry** is a long-time wanderer and photographer of the Colorado Plateau. He is now retired and a full time volunteer with emergency management projects along the Wasatch Front.

**Patricia Priebe-Swanson** is an ex-Seattle-ite who moved to Wayne County and became a "late-in-life" painter. She lives

with her husband and fellow artist, Brian, in an off-the-grid home near Teasdale.

**Judy Rollins** is a woman of leisure and mystery.

**Barry Scholl** is an attorney who once was a magazine editor. In his spare time he enjoys hiking and playing guitar.

**Susan Snow** gardens, quilts, and lives full-time in Wayne County with her husband, artist V. Douglas Snow.

**Debora Threedy** wears many hats: law professor, author, actress, playwright, musician, and naturalist. She's been on the board a *looong* time.

**Beckie Rock** is a graphic artist and designer in Holladay, Utah who has served Entrada for many years designing everything from this newsletter to event posters, websites, advertising and banners.

## Changes

Brenda and Hank Winawer recently announced their decision to really retire and step down from their positions with Entrada.

When Hank and Brenda retired to Torrey nearly ten years ago it didn't take them long to get involved with Entrada. Brenda accepted a position as the Institute's administrative assistant. Over time, as her organizational skills and dedication became evident, her responsibilities grew. At the beginning, her job consisted primarily of distributing posters and setting up chairs for Entrada's weekly Saturday evening events at the Robber's Roost Bookstore. By the time she stepped down, she'd also taken on minding the checkbook (and the Quickbook on the computer); tracking registrations for workshops, the Cowboy Poetry Festival, and other special events; rounding up donations

for the annual fundraiser; communicating with board members and officers; handling calls from members; and anything else that needed doing.

Hank, after years as unofficial assistant to Brenda, finally joined the board of Entrada. Their contributions, individually and collectively, have been enormous and Entrada owes them a debt of gratitude for service “above and beyond.” We’ll miss working with them and hope we’ll see them from time to time – sitting in those chairs at the bookstore instead of setting them up!

After much consideration, the Board has decided that Brenda’s departure presented an opportunity to “ramp up” Entrada’s sole staff position. Accordingly, we advertised for an Operations Manager/Executive Director, someone with experience with non-profit organizations, particularly with the development side of things. In short, we were looking for someone who could help us take Entrada to the “next level.”

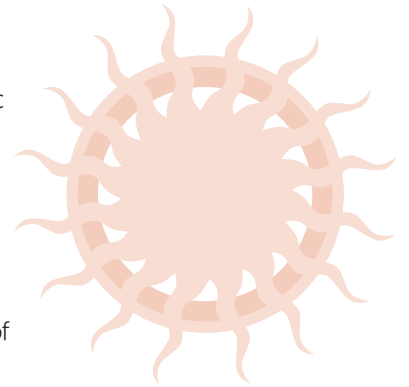
We found that someone, and it turns out to be someone that many of you probably already know: Nanette (Nan) Anderson. She’s been the executive director of several Wayne County-related non-profits, including the Wayne County Travel Council, Wayne County Economic Development, and the Grand Circle Association. Most recently, she has been the executive director of the Utah Tourism Industry Coalition since 2002. You may also know her from the Bicknell International Film Festival (BIFF), as she and her husband, James, own the Wayne Theater. Welcome aboard, Nan!

# ENTRADA & WAYNE COUNTY

## 2008 Calendar of Events

*All Entrada events begin at 7:30 p.m. at the Robbers Roost Bookstore unless otherwise noted.\**

<b>July 18</b>	Capitol Reef High Desert Bike Race - various locations
<b>July 19</b>	Dave Shields – Author of “The Race” Tour de Life, The Tour, etc.
<b>July 25</b>	Bicknell International Film Festival - Wayne Theater, Bicknell
<b>Aug 1, 2, &amp; 3</b>	Torrey Music Festival
<b>Aug 8-9</b>	Women’s Redrock Music Festival
<b>Aug 11-16</b>	Wayne County Fair, Loa
<b>Aug 23</b>	Phoebe Craig – Harpsichord concert
<b>Aug 30</b>	Bruce Berger – Author of “Visions of Stone”
<b>Sept 6</b>	Stephen Trimble – Author of “Bargaining for Eden”
<b>Sept 13</b>	Mike Getty – Paleontology on the Grand Staircase
<b>Sept 20</b>	Kate Macleod – Concert
<b>Sept 27</b>	Chris Cokinos – Nature Writing
<b>Oct 4</b>	Julia Corbett – Author of “Communicating Nature”
<b>Oct 11</b>	Entrada Fall Fundraiser with keynote David Lee



\*Please refer to our calendar at [www.entradainstitute.org](http://www.entradainstitute.org) for ongoing updates to our weekly Saturday evening events and further details on our scheduled programming. We are currently confirming presenters and performers.

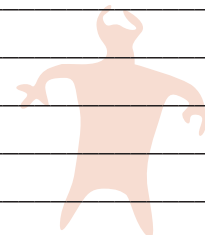
**Yes!** Sign me up as an Entrada Member-Friend!

Renew/sign up for membership now and receive a FREE copy of the Entrada CD Journal.

Individual	\$30	_____
Cedar Mesa	\$100-\$499	_____
Grand Wash	\$500-\$999	_____
Chimney Rock	\$1,000-\$4,999	_____
Golden Throne	\$5,000-\$9,000	_____
	Total	_____



Name \_\_\_\_\_  
 Address \_\_\_\_\_  
 City \_\_\_\_\_  
 State \_\_\_\_\_  
 Phone \_\_\_\_\_  
 Email \_\_\_\_\_



Fill out form and enclose check made payable to Entrada Institute. Send to Entrada Institute, P.O. Box 750217, Torrey, Utah 84775. Contributions are tax-deductible. Entrada is a 501 (c) 3 nonprofit organization

## Entrada Institute Artist In Residence 2008

Each year, Entrada selects an Artist in Residence. The residency includes a week's lodging in Wayne County and a modest stipend. Past recipients have included visual artists, poets, musicians, and photographers. The following essay was written by Shirley Hopkins, the Entrada Artist in Residence for 2008.

What was the year? Sometime before I was in junior high school so it must have been the early 50s. We did not do much traveling, so when Dad said we were going on a camping trip to Southern Utah, the anticipation was high. Somehow, after traveling several hundred miles from Salt Lake City and ending up on a washboard road in the middle of nowhere, my enthusiasm for this adventure was waning. And then, there it was, the most lush orchard in spring's full bloom nestled at the entrance to a wonderland of color. Dad had someone special he wanted to see, the superintendent of the Park. Apparently, Dad and this man had been in the CCCs or were forest rangers together at some earlier point in their lives. (Was this rugged fellow Charles Kelly? I couldn't swear it was but, boy, does the name sound familiar.)

I don't remember much of that first experience in Capitol Reef (or was it called Wayne Wonderland then?). I do remember the stern warning of the park superintendent that we should not pitch a tent near a wash as there was danger of flash floods. I must have been quite impressed with the prospect of massive walls of water gushing through narrow gorges as the stern warning comes to mind often when hiking in Utah's wild country.

There were no official campsites back then, just some grassy areas where one could pitch a tent with a parking spot nearby and a place to build a fire. There were no more than one or two other families there that day. It was as if we had this entire wonderland to ourselves. Our gear consisted of a 9x9 Coleman umbrella tent, a couple of army cots, sleeping bags, and lots of water. Most of the latter was guzzled by our 1950 Studebaker that heated up on steep grades and in high temperatures.

Over the years, I have visited Capitol Reef often but supporting my family of three girls and two boys took precedence. Usually, a

visit was on the way to or from somewhere else with little time to spend exploring. Each time, I promised myself I would be back.

My formal study was at the Academy of Art in San Francisco, after a year at the university. My specialty was airbrush, but I dabbled in oil, pen and ink, and watercolor. While in San Francisco I was privileged to paint a couple of murals for local cafes. After art school I returned to Salt Lake to help my father in his printing business. I left to return to college while working part time for Gold Strike Stamp Company. (Remember Gold Strike Stamps? You got Gold Strike Stamps and gold-colored silverware as an incentive for buying gas – at 19 cents a gallon!) While affiliated with this company, I worked on their product catalog for a number of years. With a growing family to support, I began my own graphic arts/typesetting business, Graphics Cold Type, so I could work from home. Customers were accustomed to seeing me at work at my art table while using a foot to rock a baby. Nearby there were often one or two youngsters at their own desks.

And so the years sped by, my love of art taking a back seat to commercial work, and then to working with computers. The computer opened up a whole new and exciting art medium for me. When I started there were no programs like PhotoShop or Painter. You could scan art, but the crisp, vector style of art that is now produced could only be created by writing PostScript code. That led to computer programming. Then when programs such as Quark and PageSpeed opened their code to scripting, I found excitement in being able to write programs to push these programs to their limits. For just short of twenty years, the fast-paced evolution of computing took over, leaving my airbrush idle and my paint brushes drying out between an occasional weekend dabble.

Then, with my children raised and me looking forward to retirement, came an announcement in the paper that Entrada Institute was accepting applications for Artist in Residence. To my unending delight, I was accepted. I now look forward to spending as much time in Capitol Reef as possible this year (and maybe for years to come) photographing and sketching. This year I hope to complete several works as part of a signature project combining traditional and computer art. – Shirley Hopkins



# Wayne High School Cowboy Poetry Winners



## Untitled

When folks talk about cowboys  
Reference is often made about  
The romance of the old west

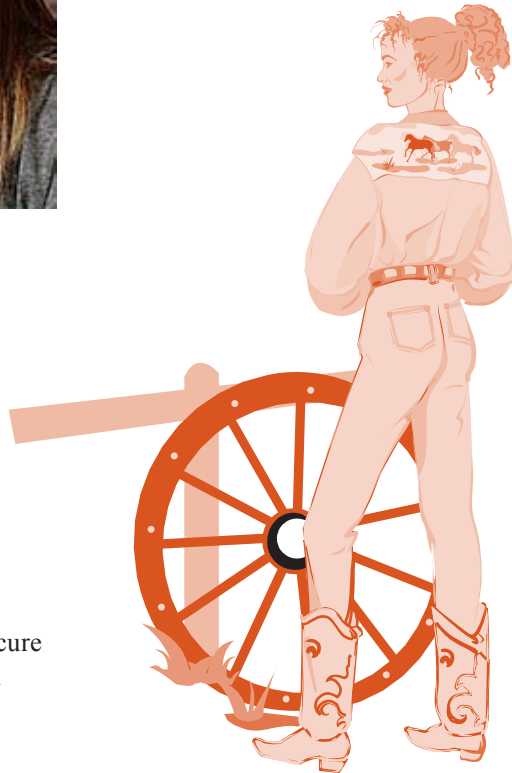
There were very few doctors  
Few dentists, and every day  
Proved to be a great big test

Home remedies often had to be the cure  
Cod, liver oil, and milk of magnesia  
One had to endure

If you broke a bone  
You had to set it yourself  
There weren't any pain pills  
On the medicine shelf

So when you say romance  
Keep it in love  
Not in living as they did  
In Lonesome Dove

– Caitlin Johnson, First Place Winner



## Cowgirls

Not all cowboys are boys,  
Some of the best are girls.  
They are not all makeup and curls.

They can ride, they can rope.  
They wear wranglers and boots.  
They are honest and true to their roots.

These cowgirls are smart;  
They can outwit you any day.  
So, be sure and stay out of their way.

Now, remember, all cowboys are not boys.

– Krista Durfey, Runner-Up

## Western Skies

It's fading glory  
So vast, so strong  
It's time was here  
But now it's gone

Those Western Skies  
A cowboy's home  
They loved it there  
Secluded, alone

These Western Skies  
Kept them gritty and tough  
Like a sweet addiction  
They couldn't get enough

– Morgan Torgerson, Runner- Up





NONPROFIT  
US POSTAGE  
**PAID**  
PERMIT 493  
SALT LAKE CITY, UT

---

135 EAST MAIN #101

---

P.O. Box 750217

---

TORREY, UTAH

---

84775

---

[www.entradainstitute.org](http://www.entradainstitute.org)

---

## Torrey Music Festival August 1-3

It almost time for the fifth annual Torrey Music Festival Aug. 1 through 3 at Robber's Roost Bookstore, 125 West Main, Torrey, Utah, next door to Capitol Reef National Park. The annual event, highlighting Torrey town and the country around it with good music, food and fun, is sponsored by Entrada Institute, a cross section of local businesses, private donors and is supported by ticket sales. "The festival offers a broad cross



section of different musical genres, albeit with an emphasis on mostly acoustic-based artists," said Entrada board president Steve Lutz, whose band Tangleridge will perform Friday, the festival's opening night. Even those acts that have performed in past years are scheduled at different times this year, which allows audience members to catch an eclectic cross section of singer-songwriters, bluegrass bands and contemporary folk groups. "Based on audience feedback and questionnaires, most of our attendees have broad tastes," Lutz said. "This year's festival should satisfy even the most eclectic musical appetites." The festival also plays host to vendors offering food, beverages, musical instruments, jewelry, fresh locally grown produce and other items. "Based on past experience, we have found that vendors really add to the atmosphere. We're glad to be able



*Wishing Chair joins the line-up at the Torrey Music Festival, August 1-3.*

to provide them with a venue to highlight their great culinary, artistic and other skills," Lutz said. The festival also welcomes volunteers. Volunteers receive a free three-day pass to the festival. For information or to contact volunteer coordinator John Lee-mail: [info@torreymusicfestival.com](mailto:info@torreymusicfestival.com). Festival tickets are available at Robber's Roost and other Wayne County venues, Local Music in SLC, the Acoustic Musician in Sandy, Acoustic Music in Salt Lake, at the gate or on line. One-, two- and three-day passes are available. For more information on the festival, performers, on-line ticket sales and sponsors, visit [www.torreymusicfestival.com](http://www.torreymusicfestival.com).



*Badly Bent will perform again this year at the Torrey Music Festival.*